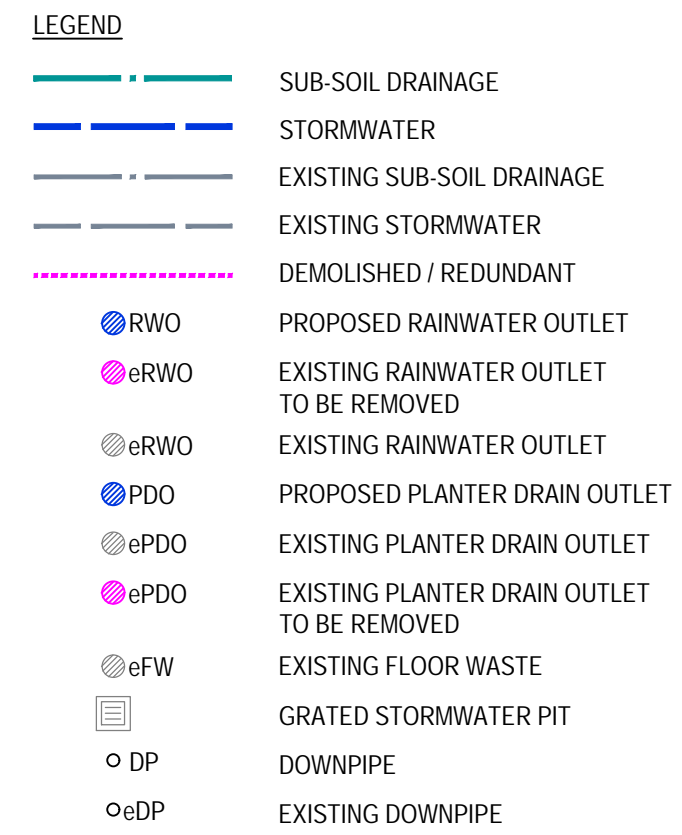




Issue	Description	Date	Drawn	Approved
A	ISSUE FOR DEVELOPMENT APPLICATION	06.12.21	DW	NP
B	REISSUE DEVELOPMENT APPLICATION	08.07.22	DW	NP

[illegible]

Architect

squillace

ACOR Consultants Pty Ltd
Suite 2, Level 1, 33 Herbert Street
St Leonards NSW 2065
T +61 2 9438 5098

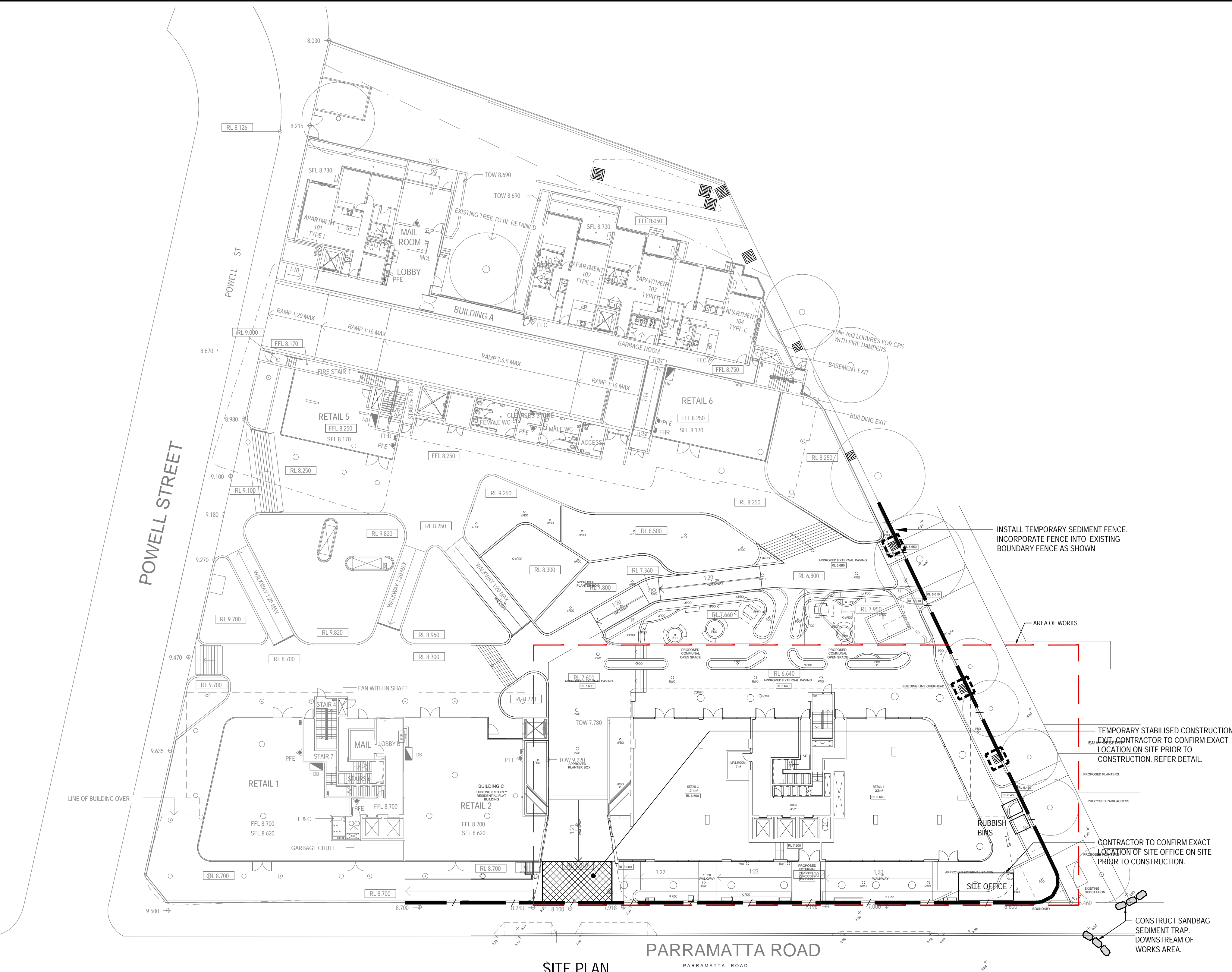
 

ENGINEERS | MANAGERS | INFRASTRUCTURE PLANNERS | DEVELOPMENT CONSULTANTS

GROUND FLOOR STORMWATER PLAN

Drawn DW	Date DEC 2021	Scale 1:200	A1	Q.A. Check NP	Date 02.12.21
Designed NP	Project No. NSW212141			Dwg. No. C3.01	Issue B

NOT FOR CONSTRUCTION



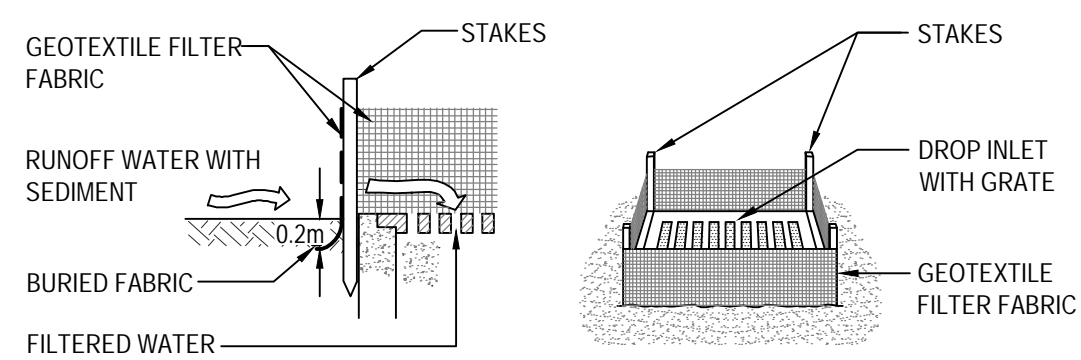
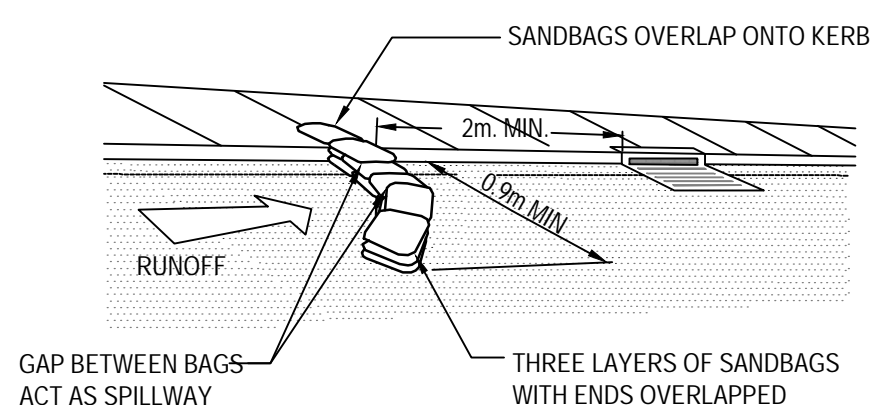
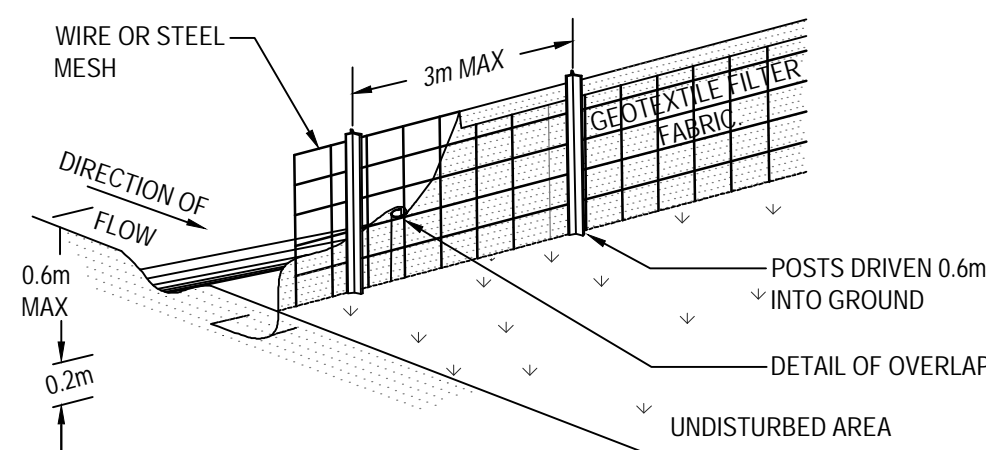
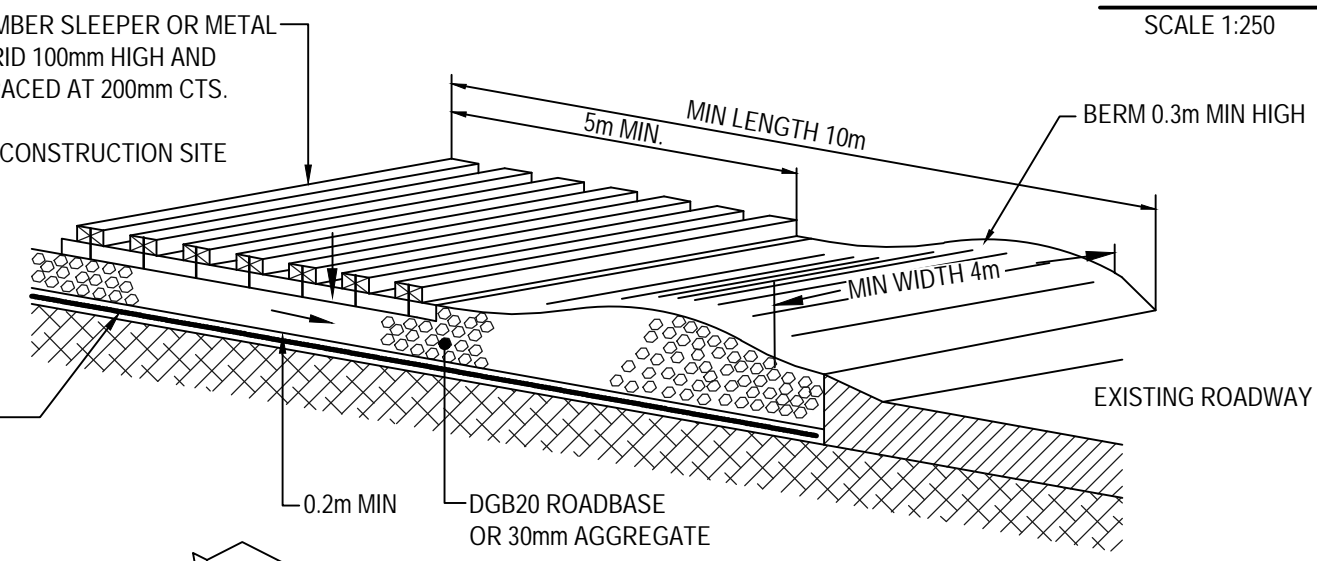
SITE PLAN
SCALE 1:250

NOTE:
ENSURE THAT ALL COUNCIL AND PUBLIC UTILITY ASSETS ARE MAINTAINED AND PROTECTED AT ALL TIMES IN THE VICINITY OF THE TEMPORARY CONSTRUCTION EXIST

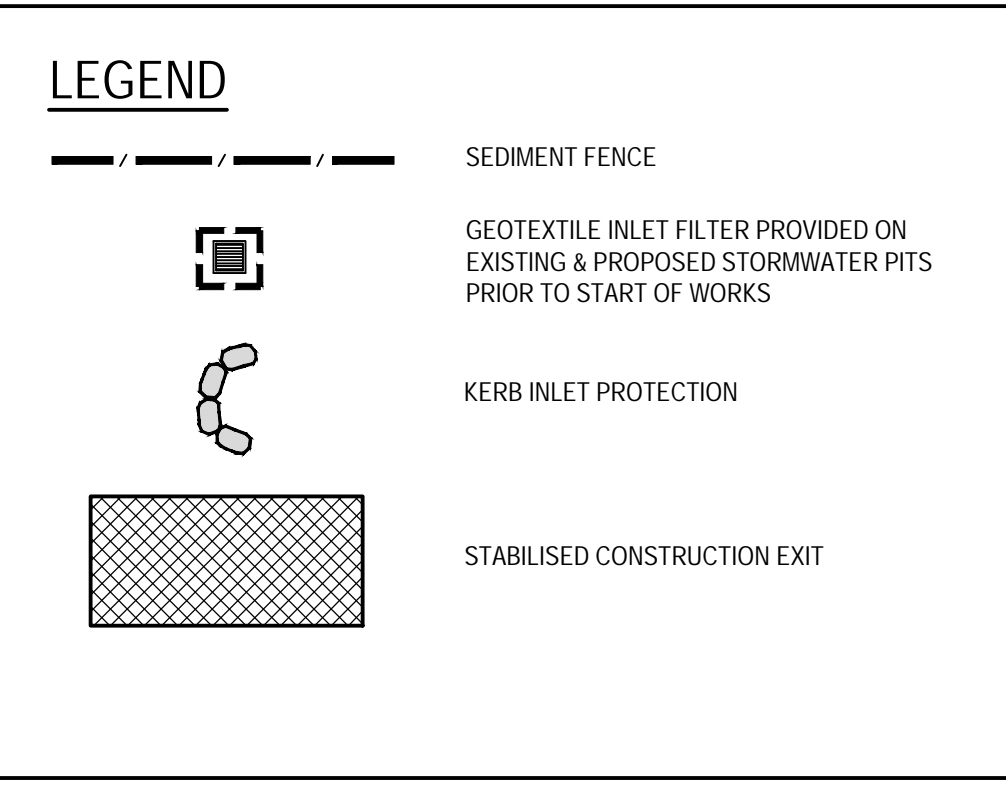
GEOTEXTILE FABRIC DESIGNED TO PREVENT INTERMIXING OF SUBGRADE AND BASE MATERIALS AND TO MAINTAIN GOOD PROPERTIES OF THE SUB-BASE LAYERS. GEOTEXTILE MAY BE WOVEN OR NEEDLE PUNCHED PRODUCT WITH A MINIMUM CBR BURST STRENGTH (AS3706.4-90) OF 2500N.

- CONSTRUCTION NOTES**
1. STRIP TOPSOIL AND LEVEL SITE.
 2. COMPACT SUBGRADE.
 3. COVER AREA WITH NEEDLE-PUNCHED GEOTEXTILE.
 4. CONSTRUCT 200mm THICK PAD OVER GEOTEXTILE USING ROADBASE OR 30mm AGGREGATE.
 5. CONSTRUCT HUMPS IMMEDIATELY WITHIN BOUNDARY TO DIVERT WATER TO A SEDIMENT FENCE OR OTHER SEDIMENT TRAP WHERE THE SEDIMENT IS COLLECTED AND REMOVED.

MAINTENANCE NOTES
THE EXIT SHALL BE MAINTAINED IN A CONDITION WHICH PREVENTS TRACKING OR FLOWING OF SEDIMENT OFF THE CONSTRUCTION SITE. THIS MAY REQUIRE PERIODIC TOP DRESSING WITH ADDITIONAL GRAVEL AS CONDITIONS DEMAND AND REPAIR AND/OR CLEANOUT OF ANY MEASURES USED TO TRAP SEDIMENT. ALL SEDIMENT SPILLED, DROPPED, WASHED OR TRACKED OFF THE CONSTRUCTION SITE MUST BE REMOVED IMMEDIATELY.



- EROSION AND SEDIMENT CONTROL NOTES**
- GENERAL INSTRUCTIONS**
- E1. THIS PLAN IS TO BE READ IN CONJUNCTION WITH THE ENGINEERING PLANS, AND ANY OTHER PLANS OR WRITTEN INSTRUCTIONS THAT MAY BE ISSUED AND RELATING TO DEVELOPMENT AT THE SUBJECT SITE.
 - E2. THE SITE SUPERINTENDENT WILL ENSURE THAT ALL SOIL AND WATER MANAGEMENT WORKS ARE LOCATED AS INSTRUCTED IN THIS SPECIFICATION.
 - E3. ALL BUILDERS AND SUB-CONTRACTORS WILL BE INFORMED OF THEIR RESPONSIBILITIES IN MINIMISING THE POTENTIAL FOR SOIL EROSION AND POLLUTION TO DOWNSLOPE LANDS AND WATERWAYS.
- CONSTRUCTION SEQUENCE**
- E4. THE SOIL EROSION POTENTIAL ON THIS SITE SHALL BE MINIMISED. HENCE WORKS SHALL BE UNDERTAKEN IN THE FOLLOWING SEQUENCE:
 - (a) INSTALL SEDIMENT FENCES, GEOTEXTILE FILTER FABRIC DROP INLET SEDIMENT TRAP, SANDBAG KERB INLET SEDIMENT TRAP & TEMPORARY STABILISED CONSTRUCTION EXIT.
 - (b) UNDERTAKE SITE DEVELOPMENT WORKS IN ACCORDANCE WITH THE ENGINEERING PLANS. PHASE DEVELOPMENT SO THAT LAND DISTURBANCE IS CONFINED TO AREAS OF WORKABLE SIZE.
- EROSION CONTROL**
- E5. DURING WINDY CONDITIONS, LARGE, UNPROTECTED AREAS WILL BE KEPT MOIST (NOT WET) BY SPRINKLING WITH WATER TO KEEP DUST UNDER CONTROL.
 - E6. FINAL SITE LANDSCAPING WILL BE UNDERTAKEN AS SOON AS POSSIBLE AND WITHIN 20 WORKING DAYS FROM COMPLETION OF CONSTRUCTION ACTIVITIES.
- FENCING**
- E7. STOCKPILES WILL NOT BE LOCATED WITHIN 2 METRES OF HAZARD AREAS, INCLUDING LIKELY AREAS OF CONCENTRATED OR HIGH VELOCITY FLOWS SUCH AS WATERWAYS. WHERE THEY ARE BETWEEN 2 AND 5 METRES FROM SUCH AREAS, SPECIAL SEDIMENT CONTROL MEASURES SHOULD BE TAKEN TO MINIMISE POSSIBLE POLLUTION TO DOWNSLOPE WATERS, E.G. THROUGH INSTALLATION OF SEDIMENT FENCING.
 - E8. ANY SAND USED IN THE CONCRETE CURING PROCESS (SPREAD OVER THE SURFACE) WILL BE REMOVED AS SOON AS POSSIBLE AND WITHIN 10 WORKING DAYS FROM PLACEMENT.
 - E9. WATER WILL BE PREVENTED FROM ENTERING THE PERMANENT DRAINAGE SYSTEM UNLESS IT IS RELATIVELY SEDIMENT FREE, I.E. THE CATCHMENT AREA HAS BEEN PERMANENTLY LANDSCAPED AND/OR ANY LIKELY SEDIMENT HAS BEEN FILTERED THROUGH AN APPROVED STRUCTURE.
 - E10. TEMPORARY SOIL AND WATER MANAGEMENT STRUCTURES WILL BE REMOVED ONLY AFTER THE LANDS THEY ARE PROTECTING ARE REHABILITATED.
- OTHER MATTERS**
- E11. ACCEPTABLE RECEPTORS WILL BE PROVIDED FOR CONCRETE AND MORTAR SLURRIES, PAINTS, ACID WASHINGS, LIGHT-WEIGHT WASTE MATERIALS AND LITTER.
 - E12. RECEPTORS FOR CONCRETE AND MORTAR SLURRIES, PAINTS, ACID WASHINGS, LIGHT-WEIGHT WASTE MATERIALS AND LITTER ARE TO BE EMPTIED AS NECESSARY. DISPOSAL OF WASTE SHALL BE IN A MANNER APPROVED BY THE SITE SUPERINTENDENT.
- SITE INSPECTION & MAINTENANCE**
- E13. EROSION AND SEDIMENT CONTROL MEASURES SHALL BE INSPECTED AFTER RAINFALL EVENTS TO ENSURE THAT THEY OPERATE EFFECTIVELY. REPAIR AND OR MAINTENANCE SHALL BE UNDERTAKEN AS REQUIRED.



© COPYRIGHT of this design and plan is the property of ACOR Consultants Pty Ltd, ACN 079 306 246 ABN 40 079 306 246, all rights reserved. It must not be used, modified, reproduced or copied wholly or in part without written permission from ACOR Consultants Pty Ltd.

North

This drawing has been assigned an electronic code that signifies the drawing has been checked and approved by:

Issue	Description	Date	Drawn	Approved
A	ISSUE FOR DEVELOPMENT APPLICATION	06.12.21	DW	NP
B	REISSUE DEVELOPMENT APPLICATION	08.07.22	DW	NP

**STRATHFIELD COUNCIL
RECEIVED**

AMENDED PLANS

**DA2021/327
13 July 2022**

Client
Hyside Projects Subtwo Pty. Ltd.

Architect
squillace
1 / 80 Albion Street
Surry Hills NSW
2010 Australia
T 61 2 8354 1300
F 61 2 8354 1311
Email: architects@squillace.com.au

Project
HOMEBUSH APARTMENTS

21 PARRAMATTA ROAD
HOMEBUSH NSW 2140

ACOR Consultants Pty Ltd
Suite 2, Level 1, 33 Herbert Street
St Leonards NSW 2065
T +61 2 9438 5098

ACOR CONSULTANTS
ENGINEERS | MANAGERS | INFRASTRUCTURE PLANNERS | DEVELOPMENT CONSULTANTS

Drawing Title
**CIVIL SERVICES
SOIL EROSION & SEDIMENTATION PLAN**

Drawn	Date	Scale	A1	O.A. Check	Date
DW	DEC 2021	AS SHOWN	NP	NP	02.12.21
Designed	Project No.	Dwg. No.	Issue		
NP	NSW212141	C5.01	B		

NOT FOR CONSTRUCTION